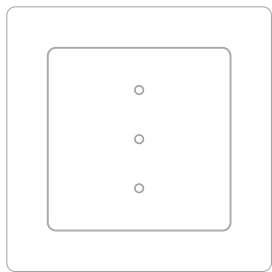


Smart Light Switch

User Manual



Specification

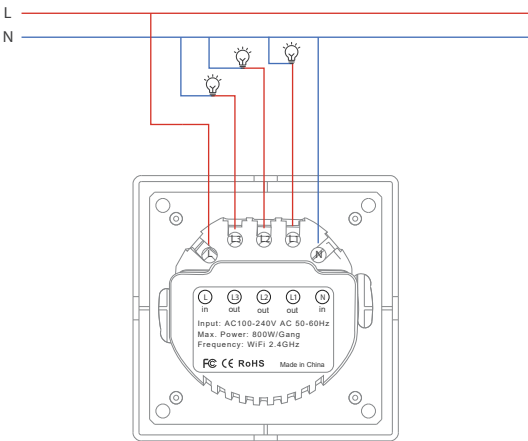
Working Voltage	AC100-240V(50/60Hz)
Max.Load	800W/Gang (Resistive load)
Max.Current	10A
Wireless Frequency	WiFi 2.4GHZ
WiFi Standard	802.11 b/g/n
Standby Consumption	0.1mA
Plastic Material	PC flame retardant

Packing List

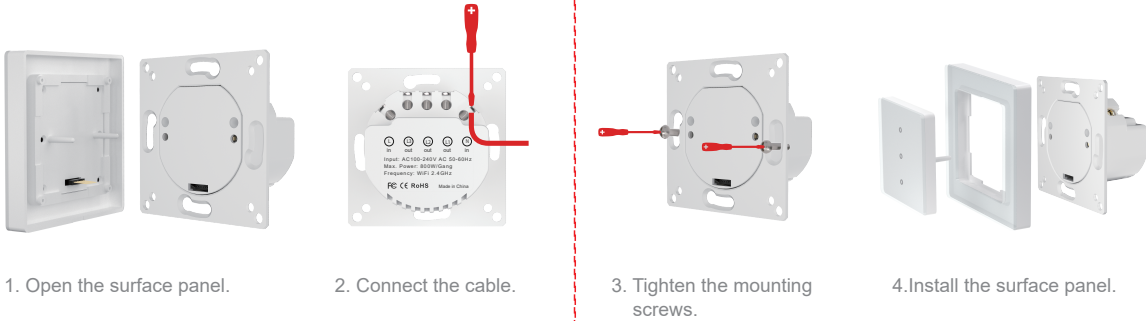
- Smart Light Switch *1
- User Manual *1
- Screws *2

Wiring for Smart Switch

Please wire for the switch according to the diagram.

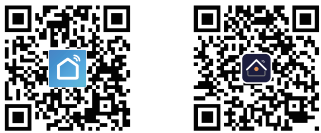


Installation Mode

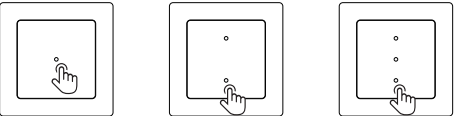


Preparation For Use

Step 1. Search for "Smart Life" or "AVATTO" in the App store or scan the QR code in the manual to download and install the App. Press the "Register" button register an account if this is your first time use; if you already have an account, press the "Login" button.

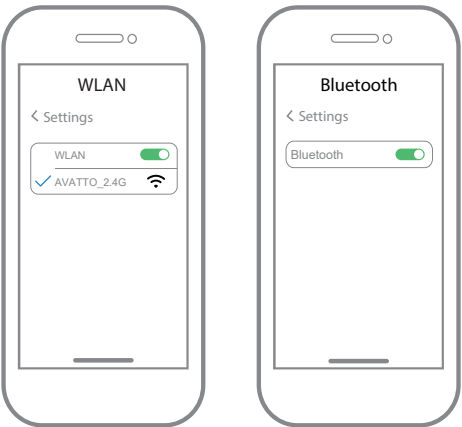


Step 2. Press and hold the device's network pairing button for 5 seconds, make the backlight flashing.

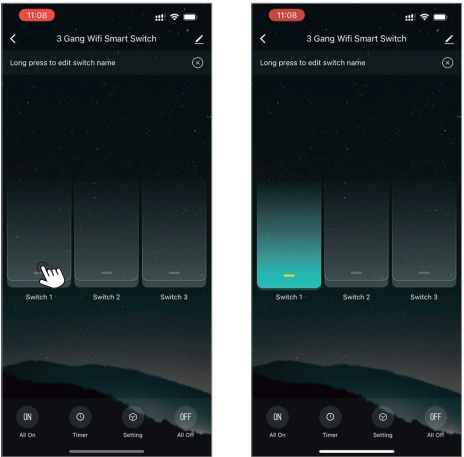
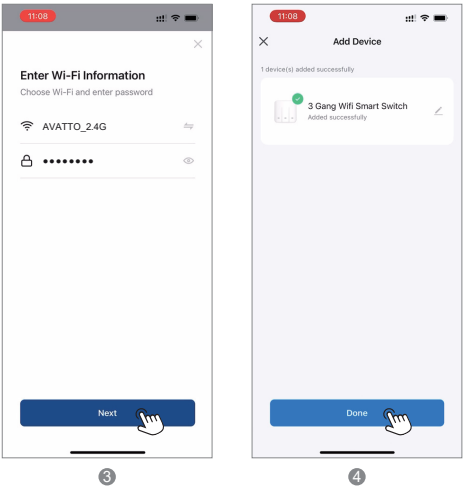
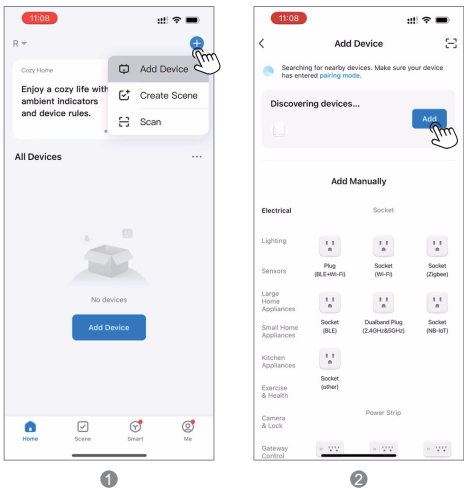


1/2/3 gang network pairing button

Step 3. Make you phone connect toWiFi(must be 2.4G), Then open bluetooth.



Step 4. Add device as shown in the figure.



Note: If the network configuration fails, do the steps 2 and connect again.