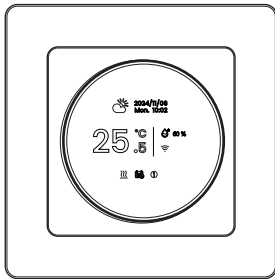


Smart Knob Thermostat

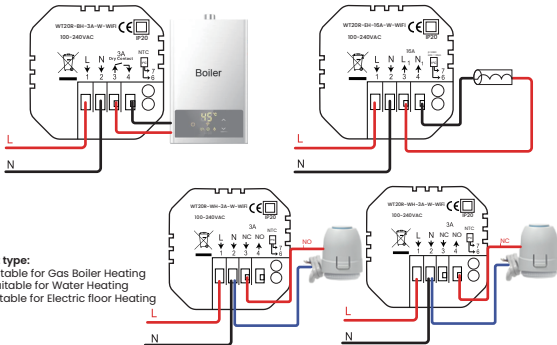
Model Number: WT20R/ZWT20R



Specification

Model Number	WT20R/ZWT20R
Protection Class	IP20
Current Load	3A (water heating, gas boiler), Max 16A (electric heating)
Sensor	NTC3950,10K
Accuracy	±1°C
Set Temperature Range	5-45°C
Room Temperature Range	5-99°C
Power Consumption	<1.5W
Ambient Humidity	5 ~ 95 % RH (Non Condensing)
Power Supply	95~240VAC , 50~60Hz

Wiring diagram



Product type:

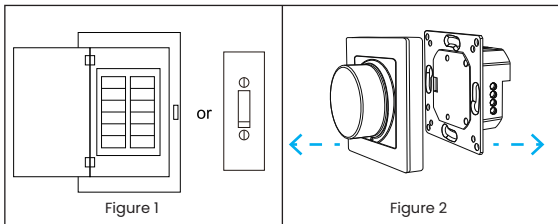
BH is suitable for Gas Boiler Heating

WH is suitable for Water Heating

EH is suitable for Electric floor Heating

Installation

The thermostat is suitable for installation within a standard 80mm pattress box or European 60mm pattress box.



Step 1. Keep power off. (Figure 1)

Step 2. Separate display and bottom (Figure 2)

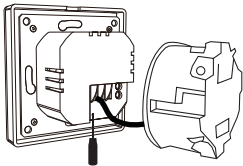


Figure 3

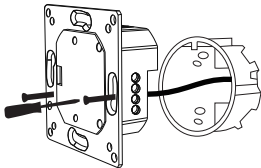
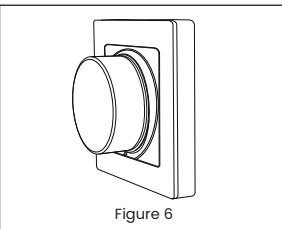
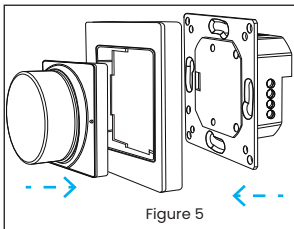


Figure 4

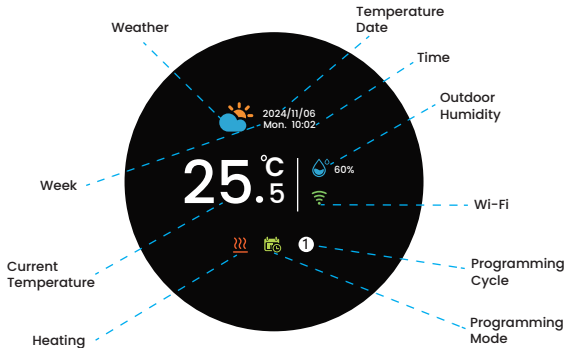
Step 3. Connect power supply, load into the appropriate terminals. (Figure 3)

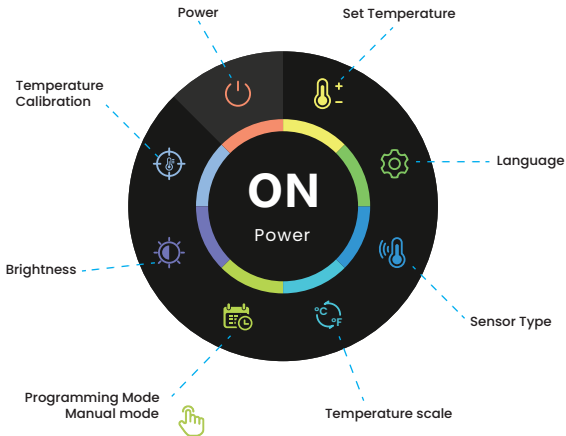
Step 4. Fix the mounting plate into the wall with screws in the box. (Figure 4)



Step 5. Put the front cover and back cover together (Figure 5).
Step 6. Installation complete (Figure 6).

Icon description





Operation

1. When powered on, the thermostat displays the home interface.
2. When the screen is on the home interface and there is no operation, you need to press the knob button to wake up the device first, and then press it to enter the function interface. Then select the function to be set; Press the knob to enter the option, rotate the knob to select the option, and press the knob to confirm the option.
3. In the function interface, Long press the knob, when the blue aperture forms a circle, the thermostat returns to the home interface. Or after determining a function, it will automatically return to the main interface after 10 seconds.
4. When the screen is on the home screen, press and hold the knob button for more than 5 seconds, then stop pressing and the WiFi icon will blink, the thermostat enters the distribution mode.

Advanced settings

1. Power

ON: The thermostat according to the setting temperature control device ..

OFF: The thermostat stops controlling the device.

2. Set temperature

Set the temperature you want. Set the temperature range from 5 to 45 ° C.

3. Language selection

Language Settings are available. 2 languages are available: English and German.

4. Sensor types

In: Internal Sensor(to control the temperature)

Ou: External Sensor(to control the temperature)

ALL: Internal/External Sensor (Internal sensor to control the temp, external sensor to limit the temp.)

5. Temperature scale

Metrological temperature standard conversion: Shift in the display of values between Fahrenheit and Celsius (°F/°C)

6. Programming Mode , Manual mode

Programming Mode: Perform temperature control according to the default temperature schedule.

Manual mode: It can be set directly on the thermostat.

7. Temperature calibration

Calibrate the temperature of the compensated sensor. The compensation temperature range is -9°C to 9°C , and the default is 0°C . Adjust the temperature after the thermostat works for 30 minutes.

8. Brightness

Standby screen brightness settings. The setting range is 0% to 100%. When the screen brightness is set to 0%, the screen light is turned off. Press the knob and the screen will light up.

Set week program on your App

Period	Weekday (Monday to Friday) (1 2 3 4 5 shows on screen)		Weekend (Saturday) (6 shows on screen)		Weekend (Sunday) (7 shows on screen)	
	Time	Temp.	Time	Temp.	Time	Temp.
Period 1	06:00	20°C	06:00	20°C	06:00	20°C
Period 2	08:00	15°C	08:00	20°C	08:00	20°C
Period 3	11:30	15°C	11:30	20°C	11:30	20°C
Period 4	13:30	15°C	13:30	20°C	13:30	20°C
Period 5	17:00	22°C	17:00	20°C	17:00	20°C
Period 6	22:00	15°C	22:00	15°C	22:00	15°C

Connect

1. Scan QR code to install "Smart Life" APP



【Smart Life】 App

2. When the thermostat displays the home screen, Press and hold the button for more than 5 seconds, then stop pressing and the WiFi icon will blink, open the Smart Life App on the phone. At the same time, turn on the Bluetooth of the phone. The Smart Life App will recognize the thermostat. Follow the APP instructions to add the distribution network.

